



## DELTA<sup>®</sup>-FASSADE S

PREMIUM QUALITY

**UV-Resistant Water Resistive Barrier**  
For open joint cladding systems.



- Water resistive barrier
- Highly UV resistant
- Vapor permeable
- For open joint cladding systems
- For new construction & renovation

The optimum solution for very demanding cladding systems.



#### DELTA®-FASSADE S

Facing constructions featuring very wide open joints offer new design options – at the same time, they increase the risk of the wall assembly being impaired by UV light and moisture. DELTA®-FASSADE S is a safe solution as a water resistive barrier behind open joint cladding systems featuring open joints up to 2" (50 mm) wide and open joint areas of up to 40% of the entire surface.

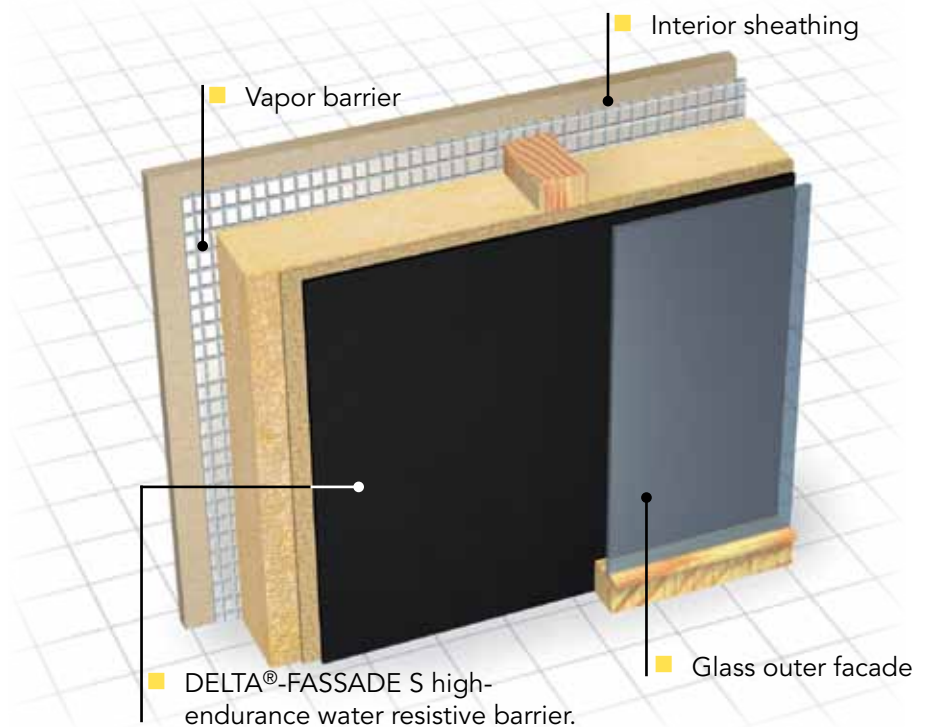
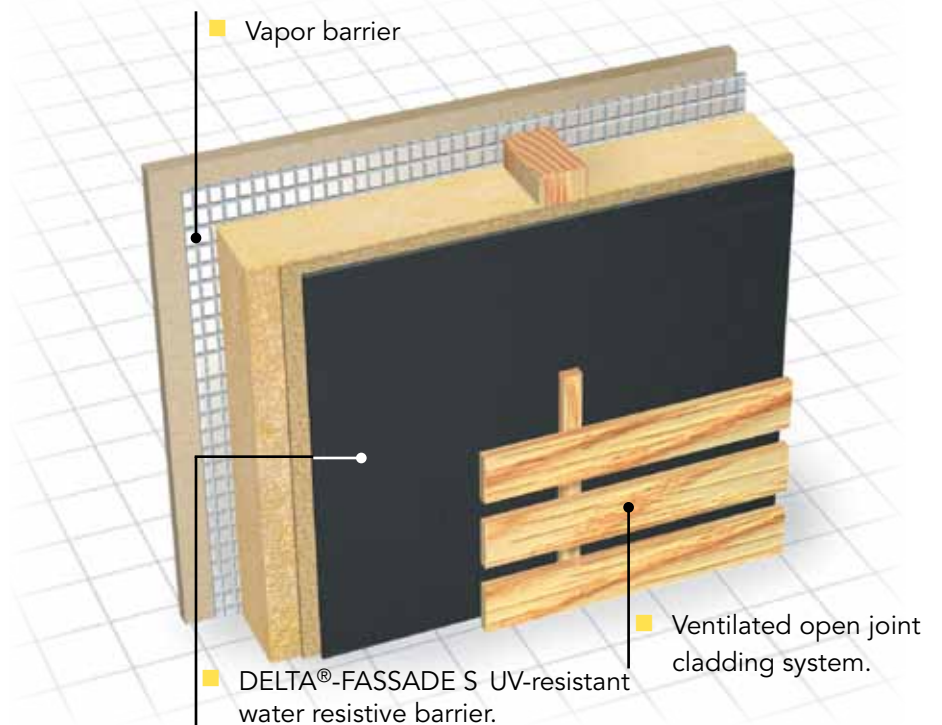
PREMIUM QUALITY



A pleasant and healthy climate in the home:

# DELTA®-FASSADE

For a variety of wall assemblies. Vapor p







*Ideal solution for open joint cladding systems.*

# DES

**permeable. Highly tear-resistant and UV-resistant.**

## DELTA®-FASSADE S ...

- ... consists of a highly tear-resistant polyester substrate with a waterproof special coating.
- ... is exceptionally UV-resistant.
- ... may be installed in all back-vented cladding systems featuring open joints up to 2" (50 mm) wide and open joint areas of up to 40% of the entire surface.
- ... is highly vapor permeable (74 perms)
- ... helps to ensure a healthy and comfortable interior climate in stud wall construction due to its excellent physical properties.
- ... represents the optimum solution for windproof water resistive barriers in renovation projects.
- ... may be used in metal stud construction.
- ... is highly tear resistant.
- ... is very easy to install.



### Technical Data (typical values):

Material	Highly tear-resistant polyester felt with a special waterproof polymeric coating.	
Application	For open facings featuring joints up to 2" (50 mm) wide and open joint areas of up to 40% of the entire surface.	
Fire Characteristics	ASTM E84-09	
	Flame Spread	<75
	Smoke Developed	<450
Breaking Strength	ASTM D882-02	MD 47.4 lb/in CD 28.7 lb/in
	ASTM D882-02	MD 40% CD 45%
Elongation at Break	ASTM D882-02	MD 40% CD 45%
Bent Test	ICC AC38 (February 2008) Sect. 3.3.4.	No cracking
Water Ponding	CCMC 07102 (2004-09-03) Sect. 6.4.5.	Pass
Water Vapor Transmission	ASTM E96, Method A	74.5 perms
UV Exposure	Min. 50 years behind open facings with joints up to 2" (50mm) wide and open joint areas of up to 40% of the entire surface. Cladding system must be installed within 12 months after installation of DELTA®-FASSADE S.	
Air Permeance	ASTM E2178-03	= 0.9 L/(s m2) @ 75 Pa
Weight	Approx 5.5 lbs/100 sf (270 g/m <sup>2</sup> )	
Roll Weight	Approx 44 lbs (20 kg)	
Roll Size	164 ft x 4.92 ft (50 m x 1.5 m)	

ICC-ESR 2932

## DELTA®-Accessories for DELTA®-FASSADE S.

DELTA® System makes life easier with these accessories.



### DELTA®-THAN

Permanently elastic sealing compound for fixing and seam jointing of DELTA® sheet products. Also can be used to secure connections.

### DELTA®-FLEXX-BAND

Stretchable sealing tape for inner and outer connections to structural details such as skylights, dormer windows, exhaust pipes, cables, etc.

# DELTA®

**DELTA®-REFLEX**  
Vapor & air barrier

Coming Soon!!!  
**DELTA®-COOL**  
Energy conserving phase change materials

**DELTA®-MS**  
**DELTA®-DRAIN**  
Basement wall protection dimpled sheets

**DELTA®-FOOTING BARRIER**  
Capillary break for footings.

**DELTA® ROOF UNDERLAYMENTS**  
New ideas for better roofs.

**DELTA®-DRY**  
Ventilated Rainscreen

**DELTA®-WATER RESISTIVE BARRIERS**

**DELTA®-MS UNDERSLAB**  
Underslab vapor barrier

**COSELLA DÖRKEN**  
Cosella-Dörken Products Inc.  
4655 Delta Way  
Beamsville, Ontario  
L0R 1B4  
(905) 563-3255  
Fax: (905) 563-5582  
1-888-4 DELTA 4  
info@cosella-dorcken.com  
www.DELTA-FASSADES.com

A company of the Dörken Group

The information printed in this brochure reflects product information and specifications at the date of printing. The manufacturer reserves the right to make changes when necessary.



DELTA®-branded quality products manufactured by Cosella-Dörken.